

# VINEXPO SHANGHAI 23 - 25 OCT. 2019

## 1 ORGANISE YOUR VISIT

- Subscribe to our newsletter **and stay connected with the latest news**
- Check the exhibitors list
- Register on Wechat or via the online badge registration platform (available early August)
- Access to our accommodation offer
- **Get a free access** to our exclusive and personalised targeted business meetings service: the **One to Wine meetings**
- Access your personal account and print your e-badge
- Plan your agenda ahead and **participate to tastings and conferences**

## 2 THE SHOW

- **Easy access to the SWEECC Convention Centre** (for details, please see the following page)
- Onsite restaurants
- ATM
- Cloakroom available

## DATES, VENUE AND TIME

- > Dates: **23 - 25 October 2019**
- > Venue: **Shanghai World Expo Exhibition & Convention Center**  
**1099 Guo Zhan Road, Shanghai, China**
- > **Time:** Wednesday 23 October: 9.30 am - 6.00 pm  
Thursday 24 October: 9.30 am - 6.00 pm  
Friday 25 October: 9.30 am - 5.00 pm

# 3

## HOW TO GET THERE?

### BY PLANE

#### Pudong International Airport --- SWEECC

- > **Taxi:** about 50 minutes
- > **Subway:** Line 2, stop at Longyang Road Station, transfer to line 7 direction SWEECC (about 40 minutes)
- > **Airport Shuttle:** take line 5, stop at Dongfang Hospital Station, transfer to bus line 82, direction SWEECC (about 70 minutes)
- > **Airport subway:** Line 3, stop at Longyang Road Station, transfer to line 7 direction SWEECC (about 60 minutes)

#### Hongqiao Airport --- SWEECC

- > **Taxi:** about 35 minutes
- > **Subway:** Line 10 from Terminal 1, stop at Laoximen Station, transfer to line 8, direction SWEECC (about 40 minutes)

**Pudong International Airport Hotline: 021-38484500**

**Hongqiao Airport Hotline: 021-62688918**

### BY TRAIN

#### Shanghai Railway Station --- SWEECC

- > **Taxi:** 2 stations, at 13km from SWEECC
- > **Subway:** Line 1 to People's Square, transfer to line 8, stop at Yaohua Road Station. 7min walk to SWEECC (south gate); about 40 minutes.
- > **Subway:** Line 1 to People's Square, transfer to line 8, stop at China Art Museum. 7min walk to SWEECC (north gate); about 40 minutes.

#### Shanghai South Railway Station --- SWEECC

- > **Taxi:** 2 stations, at 9km from SWEECC
- > **Subway:** Line 1 stop at People's Square, transfer to line 8, stop at Yaohua Road Station. 7min walk to SWEECC (south gate); about 50 minutes.
- > **Subway:** Line 1 stop to People's Square, transfer to line 8, stop at China Art Museum. 7min walk to SWEECC (north gate); about 50 minutes.

#### Shanghai Hongqiao Railway Station --- SWEECC

- > **Taxi:** 2 stations, at 25km from SWEECC
- > **Subway:** Line 10, stop at Laoximen Station, transfer to line 8 direction SWEECC; about 40 minutes

**Shanghai Railway Hotline: 021-63179090**

### BY TAXI

Da zhong taxi	96822
Ba Shi taxi	96840
Jing Jiang taxi	96961
Qiang Sheng taxi	62580000
Hai Bo taxi	96933

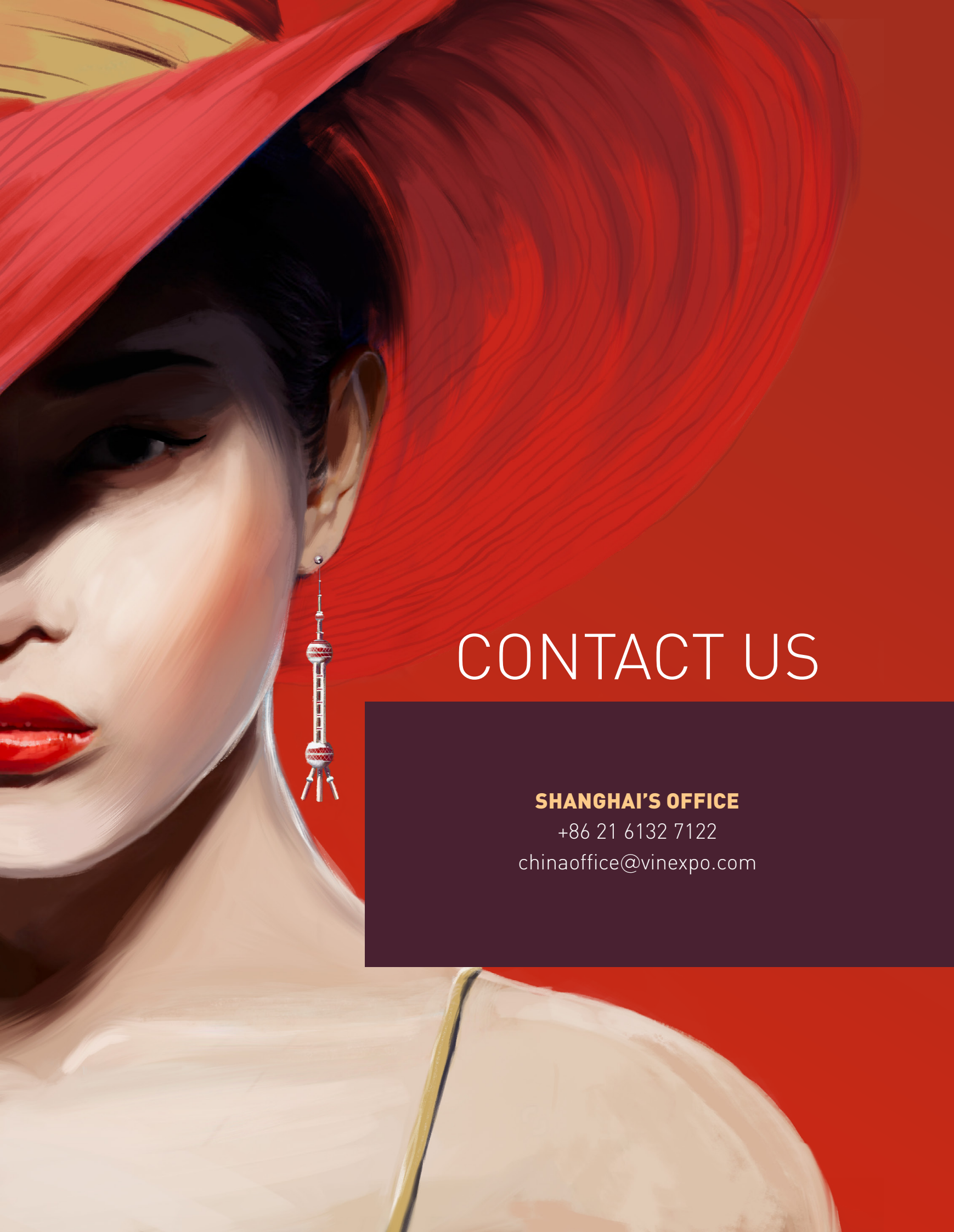
### BY PUBLIC TRANSPORTATION

#### WITH THE SUBWAY

Line 8 Yaohua Road or China Art Museum  
Line 7 Yaohua Road

#### WITH THE BUS

Lots of buses stop at station SWEECC: Bus No 1, No. 3& No. 4 (to China Art Museum), No.83, No.177 etc.



# CONTACT US

**SHANGHAI'S OFFICE**

+86 21 6132 7122

[chinaoffice@vinexpo.com](mailto:chinaoffice@vinexpo.com)